

# MATTHEW LIU FINE ARTS

祁磊 Qi Lei



2018年初，祁磊结束了在缅甸的旅行回到了北京的工作室，并陆续开始描绘这一路的所见所闻与所思所感，迄今已完成多个系列的相关主题创作。此次展览是继2019年个展“潜行者”之后的第二个展览。从亨利·卢梭到彼得·多伊格，艺术史上描绘密林、丛林的作品并不鲜见，甚至可以说是数不胜数。何况，作为东南亚一带最典型的风景、地貌特征，它原本就是本地艺术家最常表现的主题之一。诚然，这为祁磊这样一个工作、生活在中国北方的画家带来了极大的挑战，但也正是作为他者的丛林，诱使他进入了这一广阔的领地。

展览名为“一片树叶的颤动”，取自毛姆的同名短篇小说集。不过这并非毛姆原创，它源于19世纪法国文学评论家圣伯甫的名言：“将极度的欢乐与无比的失望勉强区分开来的，只是一片颤动的树叶，生活不就是如此吗？”毛著收录了6个短篇小说，都是根据他漫游太平洋地区时的见闻创作的。“在这些故事中，南太平洋诸岛的异域风光美丽而凶险，安逸而诡谲，赋予作品神奇而迷人的魅力”，也尽显作者对于人性的拷问。祁磊在东南亚虽然只是短暂的停留，但依然不乏切肤的体认和感知。

祁磊于1986年生于安徽濉溪，并于2014年毕业于天津美术学院油画专业获得硕士学位。此后他移居北京并逐渐成为年轻艺术家中的活跃人物。祁磊曾在多个画廊及艺术机构举办个展，包括《潜行者》《流过城市的河》，德玉堂画廊，上海，中国，2019 & 2017；《图像的缝隙》，ARTMIA 艺美基金会，北京，中国，2015；《日光夜景》，国美艺术基金会，香港，中国，2014等。他曾参与的群展包括《精神空间的对视——中意当代艺术联展》，圣埃莫堡，那不勒斯，意大利，2018；《在日落发生后...》，上海当代艺术馆，上海，中国，2017；《尤利西斯的凝视-绘画性与内心关照的双重回归》，今格艺术中心，北京，中国，2016；《青衿计划（2016）》，关山月美术馆，深圳，中国，2016等。另还参与了国际重要艺术博览会如香港巴塞尔艺博会，香港，中国，2023；上海西岸艺术与设计博览会，上海，中国，2021等。他的作品被德基美术馆、ARTMIA 艺美基金会、国美艺术基金会及云冈石窟研究院等重要机构收藏。

# MATTHEW LIU FINE ARTS

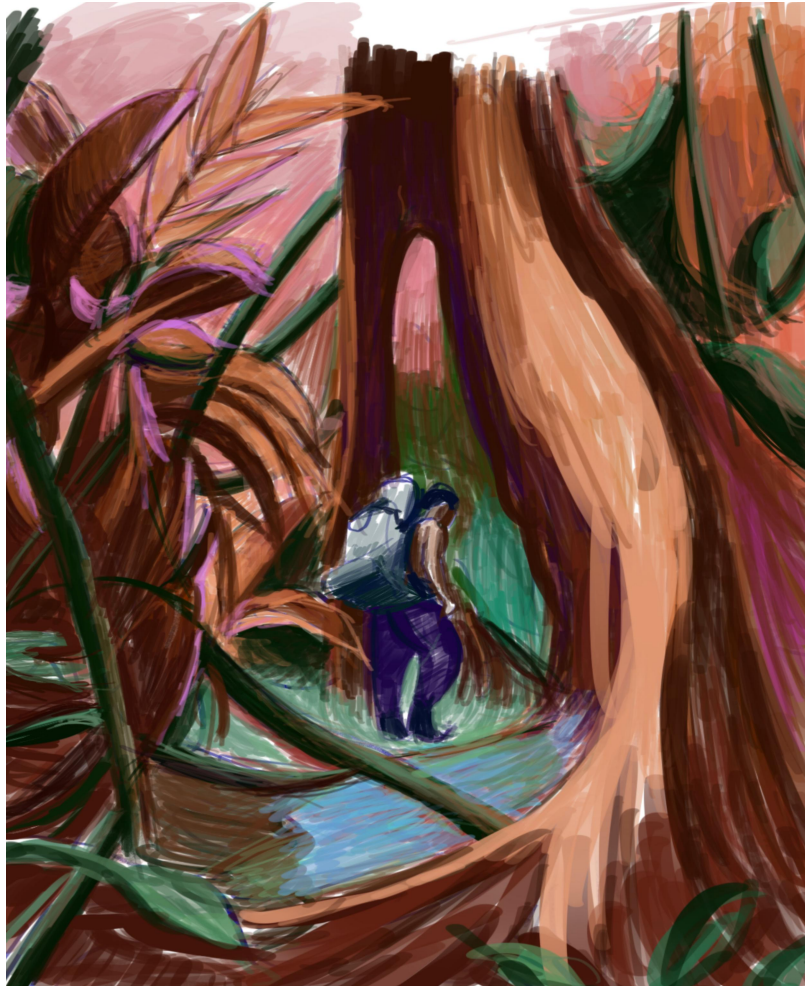
祁磊 Qi Lei

In early 2018, Qi Lei concluded his travels in Myanmar and returned to his studio in Beijing. It was during this time that he embarked on a creative endeavor to capture the sights, sounds, and reflections of his journey. Over the years, he has completed numerous series of artworks exploring various themes inspired by his experiences. Presently, this exhibition stands as his second major showcase following the successful solo exhibition titled "Stalker" held in 2019.

From Henry Rousseau to Peter Doig, the portrayal of forests and jungles in the history of art is far from rare. In fact, one could argue that there is an abundance of such works. Moreover, as the quintessential scenic and geographical characteristic of Southeast Asia, it has always been one of the most commonly represented themes by local artists. Undoubtedly, this presents a significant challenge for Qi Lei, an artist residing and working in northern China. Nevertheless, it is precisely the enigmatic nature of the jungle as an unfamiliar realm that lures him into exploring this expansive territory.

Qi Lei was born in 1986 in Anhui, Suixi, and graduated with a master's degree in oil painting from Tianjin Academy of Fine Arts in 2014. He then moved to Beijing and became an active figure among young artists. Qi Lei has held solo exhibitions in several galleries and art institutions, including "Stalker", "The River Flows Through the City", Matthew Liu Fine Arts, Shanghai, China, 2019 & 2017; "Gap of Image", ARTMIA Foundation, Beijing, China, 2015; "Day for Night", Gome Art Foundation, Hong Kong, China, 2014, etc. The group exhibitions he has participated in include "A NEW STATE OF ART - Chinese and Italian Contemporary Art Group Exhibition", Castel SAN Emo, Naples, Italy, 2018; "All Happens After Sunset..." , Shanghai Museum of Contemporary Art, Shanghai, China, 2017; ULYSSES'GAZE---The Return of Painterliness and Soulful Contemplation, Ginkgo Art Center, Beijing, China, 2016; "Qingjin plan", Guan Shanyue Art Museum, Shenzhen, China, 2016, etc. Also participated in important international art fairs such as Art Basel Hong Kong, Hong Kong, China, 2023; Shanghai West Bund Art & Design Fair, Shanghai, China, 2021, etc. His works have been collected by important institutions such as Deji Art Museum, ARTMIA Foundation, Gome Art Foundation and Yungang Grottoes Institute.

# MATTHEW LIU FINE ARTS



祁磊 Qi Lei

从林的回眸预备草图 *The Return of the Jungle preparatory sketch*

iPad绘画, 哈内姆勒收藏级打印

iPad drawing, printed on Hahnemühle archival paper

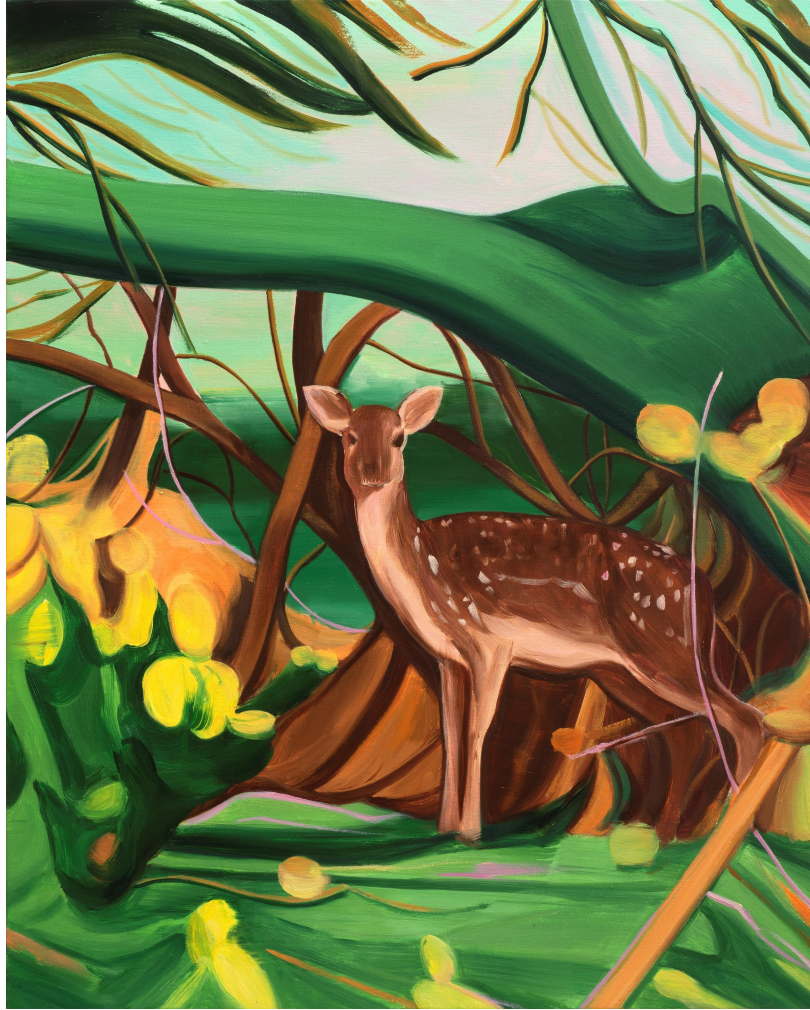
28 x 21 cm

2023

独版 Unique edition



# MATTHEW LIU FINE ARTS



祁磊 Qi Lei

鹿 *Doe*

布面油画

100 x 80 cm

2023



# MATTHEW LIU FINE ARTS



祁磊 Qi Lei

豹 *Leopard*

布面油画

100 x 80 cm

2023

# MATTHEW LIU FINE ARTS



祁磊 Qi Lei  
*迷失的季节 Lost Season*  
布面油画 Oil on canvas  
158 x 131 cm  
2022



# MATTHEW LIU FINE ARTS



祁磊 Qi Lei  
*孤独的权杖 Lonely Sceptre*  
布面油画 Oil on canvas  
180 x 140 cm  
2022



# MATTHEW LIU FINE ARTS



祁磊 Qi Lei

*穿越大吉岭 The Darjeeling Limited*

布面油画 Oil on canvas

190 x 140 cm

2021

# MATTHEW LIU FINE ARTS



祁磊 Qi Lei

*丛林的回眸 The Return of the Jungle*

布面油画 Oil on canvas

200 x 150 cm

2023



# MATTHEW LIU FINE ARTS



祁磊 Qi Lei

狩猎 *Hunting*

布面油画 Oil on canvas

200 x 150 cm

2021



# MATTHEW LIU FINE ARTS



祁磊 Qi Lei

*重寻圣方济各 Recall San Francesco di Assisi*

布面油画 Oil on canvas

210 x 160 cm

2023

# MATTHEW LIU FINE ARTS



祁磊 Qi Lei

*欢迎来到乌托邦 Welcome to Utopia*

布面油画 Oil on canvas

200 x 250 cm

2022



# MATTHEW LIU FINE ARTS



祁磊 Qi Lei

*闯入者1、2、3 Interloper 1、2、3*

布面油画 Oil on canvas

200 x 150 x 3 cm

2022